

# **ATTACHMENTS**



## **FINANCE & POLICY COMMITTEE MEETING AGENDA**

**THURSDAY 13 FEBRUARY 2014**

---

## **~ REFERENCE TO ATTACHMENTS ~**

---

### **PART A - ACTION**

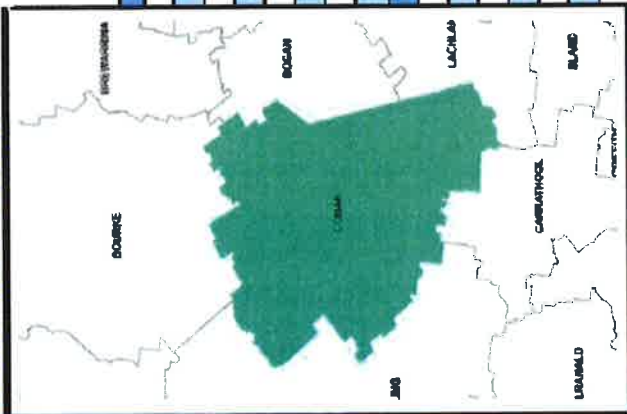
Report 1A – Comparative Information on NSW Councils 2011/2012.....22-23

### **PART B - INFORMATION**

Report 3B – Rates Reconciliation to 31 January 2014.....24-25

# Strengthening Local Government

## Cobar Shire Council



Cobar Shire has an area of approximately 45,604.8 km2 with a population of 4,710. Located at the crossroads of the Barrier Highway, Kidman Way and the Wool Track. The Shire is reliant on mining and pastoral industries and is a stop over point for tourists with a strong manufacturing and trades base.

Your Local Government Area	LGA	Group Avg
Five year population change	-5.0%	-0.8%
Population aged <19	28.5%	26.1%
Population aged >20 <59	54.8%	48.1%
Population aged >60	16.7%	25.8%
Aboriginal & Torres Strait Islanders	12.9%	7.8%
Language Other than English	3.2%	2.1%
Socio-Economic Index Ranking (1 lowest)	60	N/A

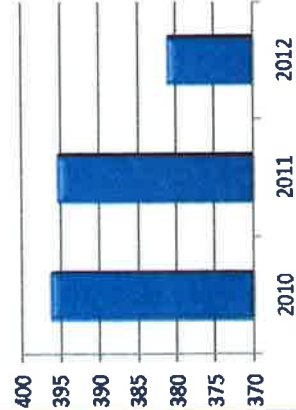
Your Local Government Area	LGA	Group Avg
Number of Councilors	12	9
Population per Councilor	411	822
Number of Equivalent Full Time Staff	152	105
2011/12 Revenue (\$'000)	\$24,557	\$22,333
Revenue per capita	\$4,980	\$3,245
Expenses per capita	\$4,909	\$3,101
Population Density (Residents per km <sup>2</sup> )	0.11	1.84

Your Public Facilities & Social Factors	LGA	Group Avg
Number of Public Swimming Pools	1	2
Number of Public Halls	4	7
Number of Public Libraries	3	2
Open Public Space (ha)	121	157
% Pensioner Rebates	13.5%	24.9%
Access to Internet at Home	62.20%	61.52%

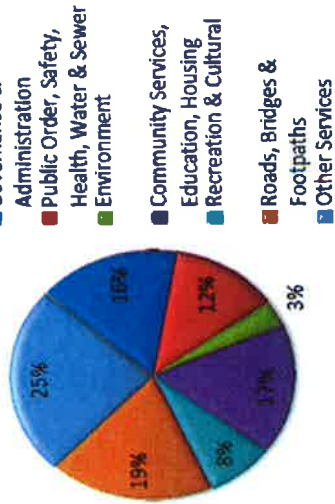
Your Local Economy	LGA	Group Avg
Unemployment Rate	4.4%	5.3%
Average Taxable Income (\$)	\$47,349	\$34,803
Average Household Family Size	3.0	2.9
Largest Industry Employer	Mining	
Value of DAs determined (\$000)	\$9,448	\$12,449
Tourist Accommodation Establishments	6	6

### Your Council's Rates and Spending

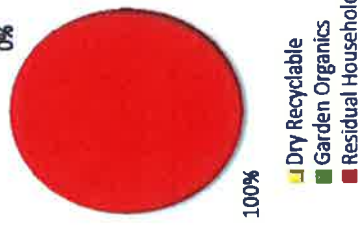
Average Residential General Rates Trend Over 3 Years



Expenditure of Services

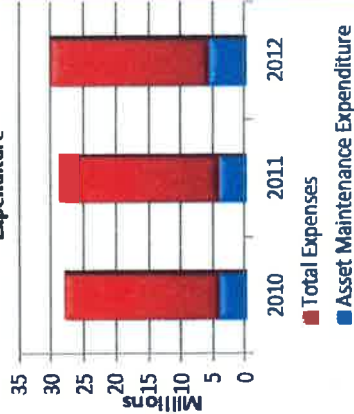


Reducing Waste



### Your Council's Waste Services Infrastructure Maintenance Expenditure

Infrastructure Maintenance Expenditure

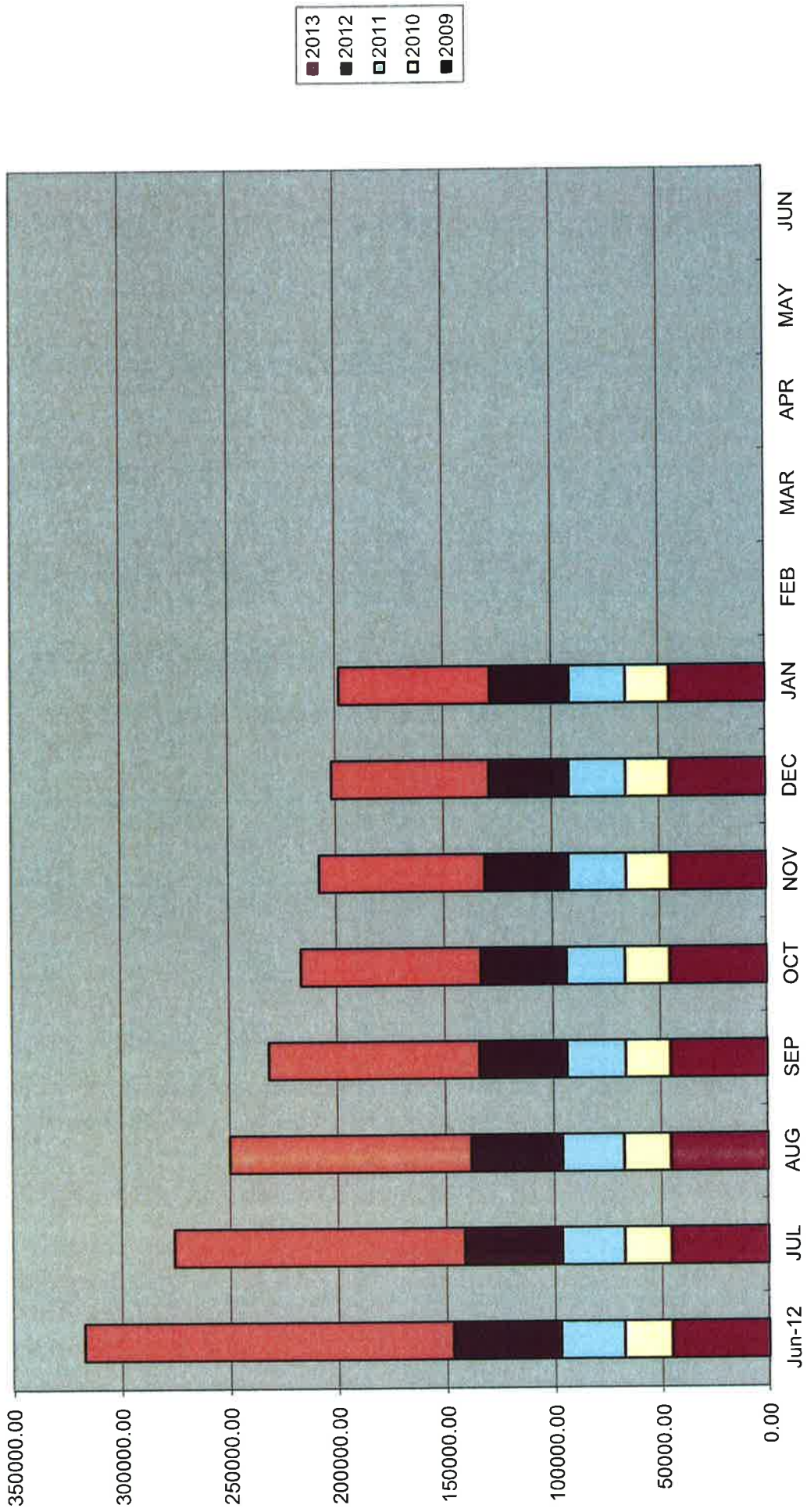


TCorp has assessed your Council's current Financial Sustainability Rating as Weak with a Negative outlook.

The Infrastructure Audit assessed Council's infrastructure management to be Very Weak.

Contacting Council	How Your Council Manages	LGA	Group Avg	How Your Council is Performing	LGA	Group Avg
36 Linsley Street	Average Residential Rate	\$381.00	\$496.99	Governance & Administration Expenditure per capita	\$792.33	\$408.57
Cobar NSW 2835	Average Business Rate	\$758.82	\$1,115.04	Environmental Expenditure per capita	\$163.46	\$212.14
Postal Address:	Average Farmland Rate	\$1,279.00	\$2,265.69	Water & Sewer Services Expenditure per capita	\$451.43	\$389.81
PO Box 223	Average Mining Rate	\$31,444.44	\$86,724.44	Community Services & Amenities, Housing & Education Expenditure per capita	\$827.62	\$306.08
Cobar NSW 2835	Average Residential Water and Sewer Bill	\$825.00	\$946.33	Recreational & Culture Expenditure per capita	\$385.32	\$267.58
Phone: 02 6836 5888	Average Domestic Waste Charge	\$180.00	\$238.39	Public Order, Safety & Health Expenditure per capita	\$155.75	\$132.83
Fax: 02 6836 5889	% of Own Source Revenue	51.83%	46.59%	Other Services Expenditure per capita	\$1,204.83	\$475.38
Email:	% Grants of Revenue	47.00%	46.97%	Average Kilogram Kerbside Dry Recyclables Collected per household/week	N/A	4.5
mail@cobar.nsw.gov.au	Operating Performance Ratio	-4.25%	-6.64%	Average Kilogram Kerbside Garden Organics Collected per household/week	N/A	9.7
Web:	Unrestricted Current Ratio	1.54	4.60	Average Kilogram Kerbside Residual Waste Collected per household/week	13.9	14.0
www.cobar.nsw.gov.au	Building & Infrastructure Renewal Ratio	40.36%	65.09%	Total Domestic Diversion Rate for Council	0.0%	30.83%
	Infrastructure Backlog Ratio	46.69%	14.59%	Roads, Bridges and Footpath expenditure per capita	\$928.01	\$938.83
<b>2012 Local Government Elections: Cobar Candidates and Councillors</b>						
LGA Demographics	% Pop in LGA	% Councillor Candidates in LGA	% Councillors Elected in LGA	% Councillors State Average	Mean gross days for Development Applications	41
Male	52%	67%	67%	73%	Number of Development Applications determined	39
Female	48%	33%	33%	27%	Library Services Expenditure per capita	\$63.68
ATSI	13%	8%	8%	2%	Library Circulation per capita	5.49
Disability	N/A	0%	0%	3%	Percentage of Companion Animals Identified and Registered	53%
NESB	3%	0%	0%	8%	Number of Companion Animals Identified	2,131
Age <30 years	44%	0%	0%	4%	<b>Comparative Information on NSW Local Government</b>	
Age >30, < 60 years	39%	50%	50%	58%	Measuring Local Government Performance 2011-12	
Age 60+ years	17%	50%	50%	38%	Premier & Cabinet Division of Local Government	

**Rate Arrears 2013-2014**  
**General Rates, Water Access, Sewer, Domestic Waste, Interest & Legal Costs**



**Total Rates Outstanding**  
**General Rates, Water Access, Water Usage, Sewer Access, Domestic Waste, Legal Costs, Interest**

