

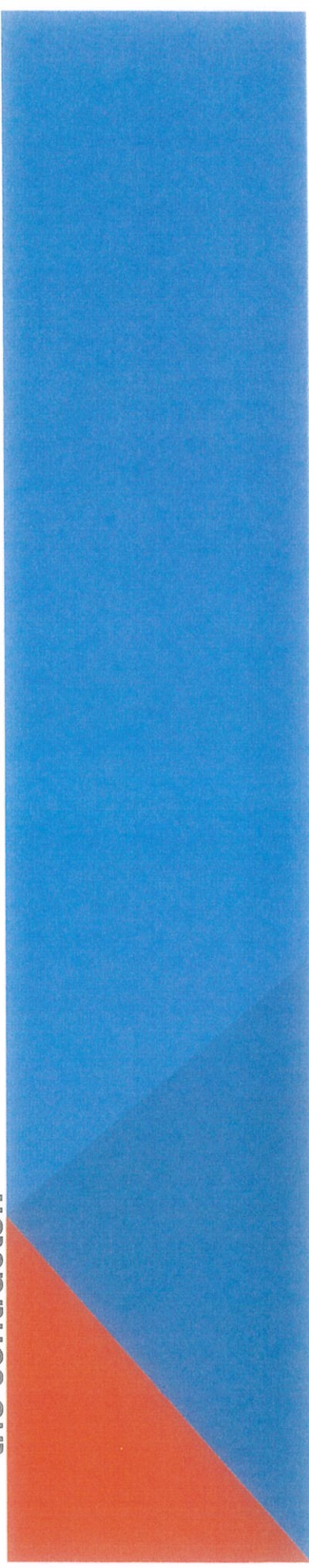
**COBAR SHIRE COUNCIL
COUNCILLOR WORKSHOP
THURSDAY, 11 JUNE 2020**



**COBAR MINERS MEMORIAL
PROJECT - AN UPDATE -
CONCEPT 2.0**

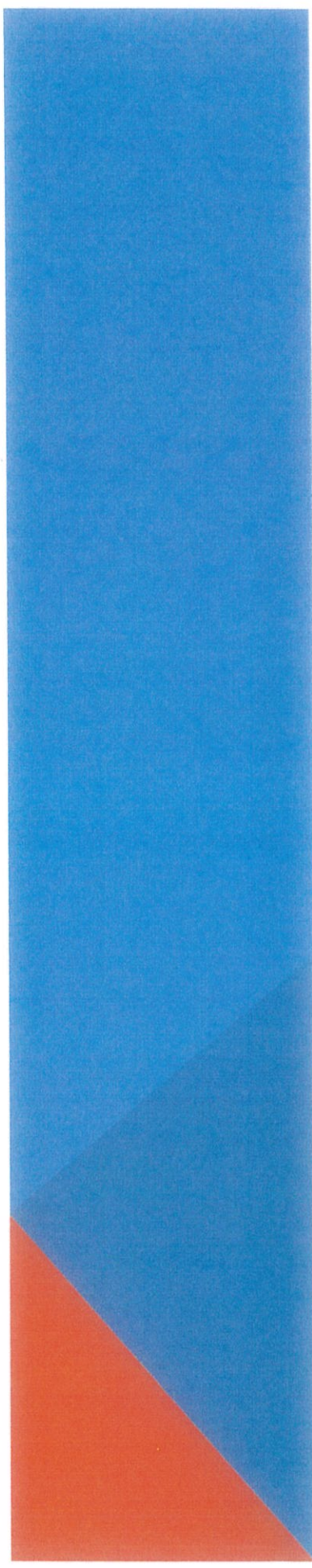
COBAR MINERS MEMORIAL – A QUICK HISTORY

- To be located in Heritage Park, it has been in the development stage for around 5 years.
- This is a community driven project, including design, with significant community donations. Council successfully secured a federal and a state grant for the project.
- After going to Tender in 2019, the project come in well above the budget. Adjustments have been made to the design to allow it to fit into the budget.
- Council has finalised the Concept 2.0 and received the updated price from the contractor.



OVERVIEW OF FUNDING

- The total budget available for the project is currently \$899,755. It consists of:
 - \$360,028 Stronger Country Communities Fund grant + \$89,950 Council Contribution
 - \$349,777 Building Better Regions Fund grant
 - \$100,000 community fundraising



CONCEPT 2.0

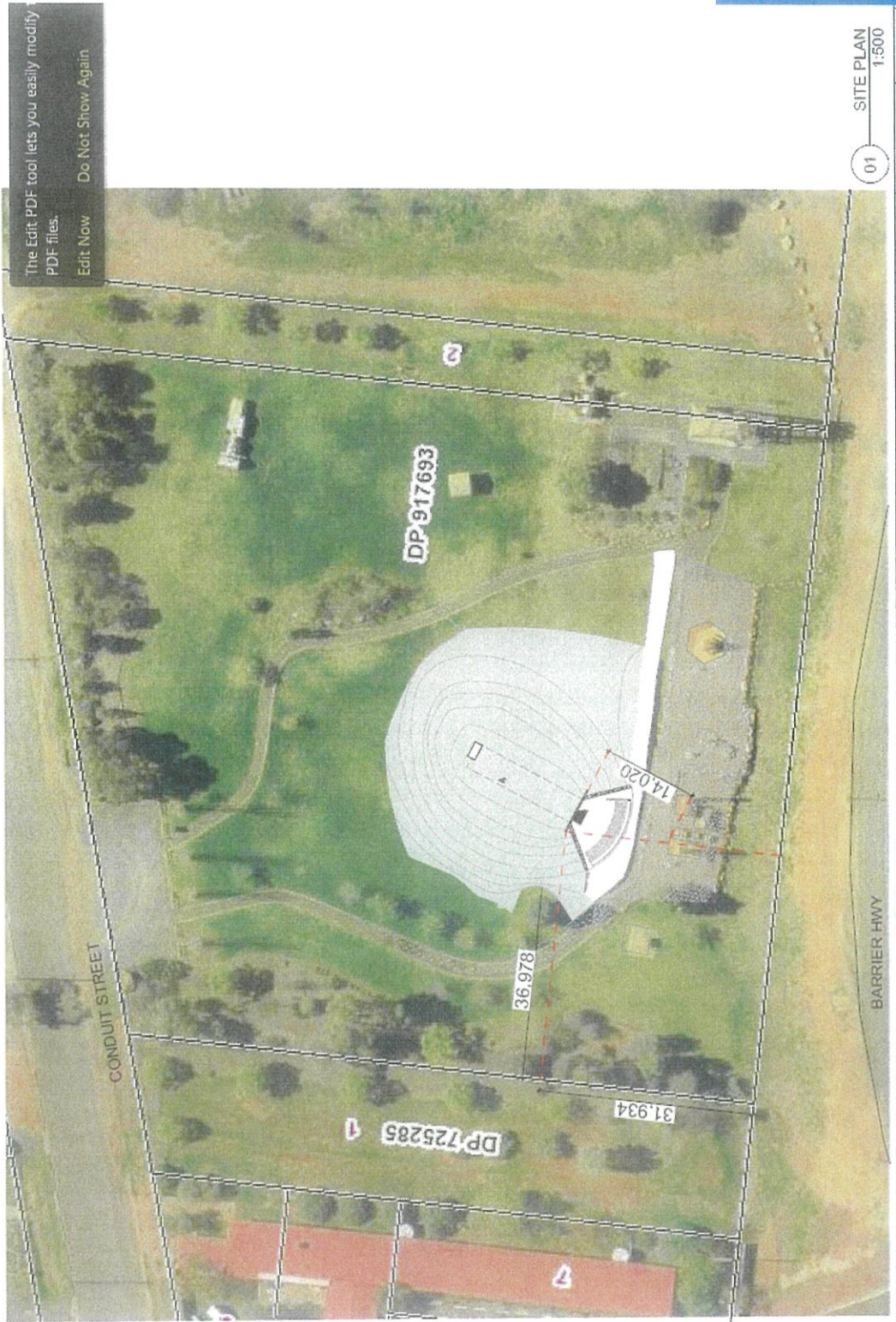
- Entrance Perspective



01 Entrance Perspective

01

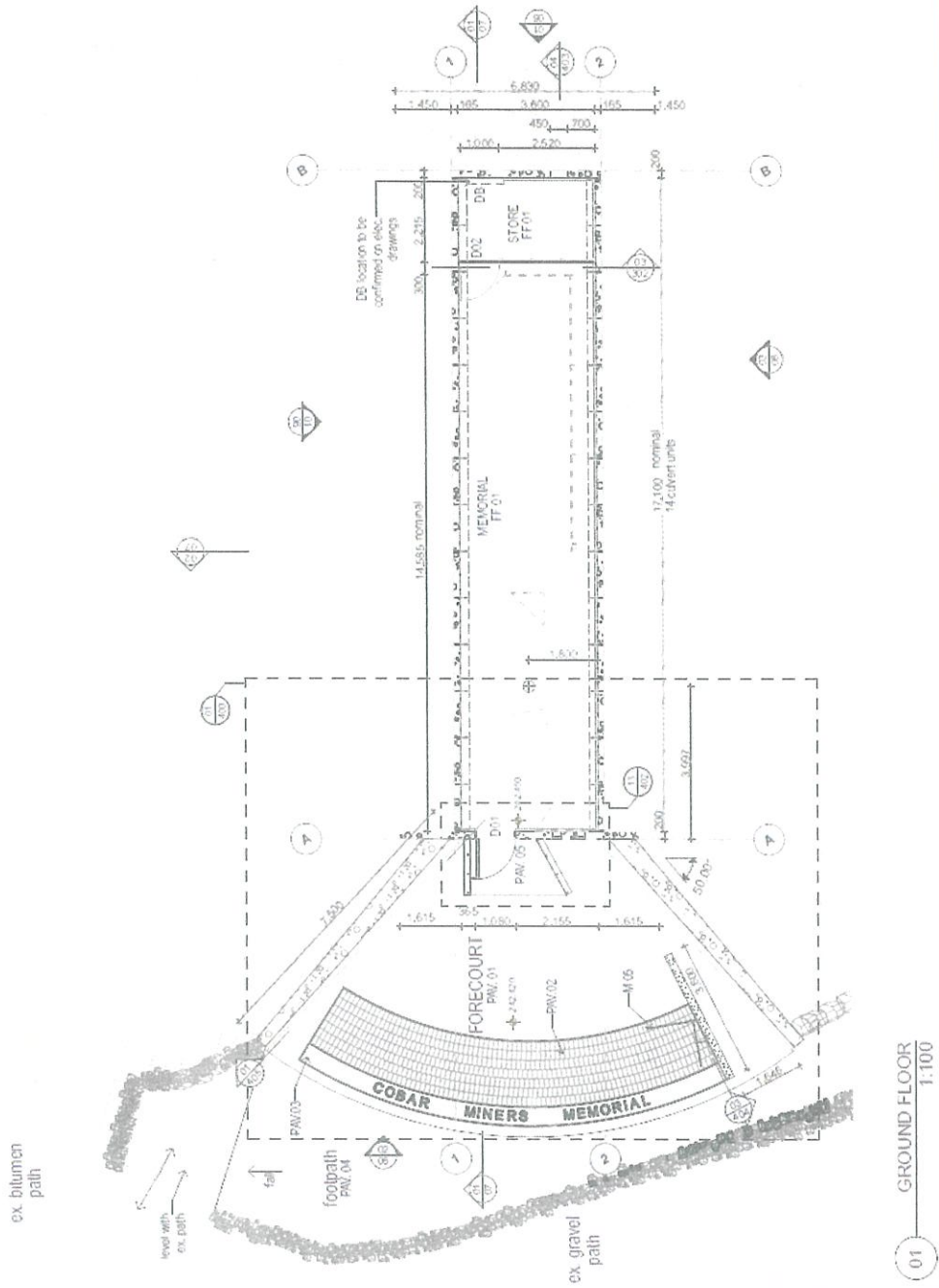
SITE LOCATION



GROUND FLOOR LAYOUT

ABBREVIATIONS LEGEND

CF.	CEILING FINISH (01)
COL	COLUMN
CONC	CONCRETE
D01	DOOR (01 - 02)
DB.	DISTRIBUTION BOARD
EX.	EXISTING
FE.	FLOOR FINISH
HR.	HANDRAIL
LMS	LANDSCAPE SURFACE (01)
M.	MEMORIAL (01-05)
MF.	METAL FINISH (01-02)
PAV.	PAVING (01-05)
PERF.	PERFORATION (01 - 02)
PC.	POWDER COATED
RL.	RELATIVE LEVEL
RW.	RETAINING WALL
WF.	WALL FINISH (01-02)



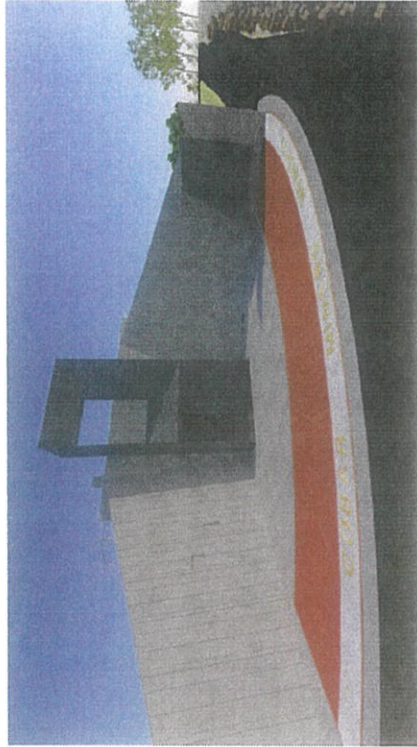
PERSPECTIVES



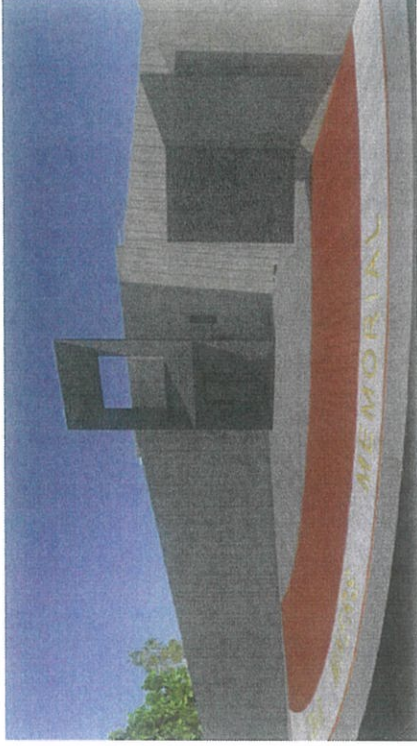
01 VIEW FROM THE SOUTH



02 VIEW FROM THE EXISTING MEMORIALS



03 VIEW OF THE FORECOURT 01



04 VIEW OF THE FORECOURT 02

**Note – There may be a landscape garden over the top, rather than turf.
To be confirmed.

CONCEPT OF THE INTERNAL DESIGN



Back board walls and ceiling to be perforated metal as on previous images- (not modelled on this image)

2 plaques/row set at an angle assist in reading from above and to provide added depth of memorial plaques

225 brass plaques set out height for universal access viewing and set into frame with perforated metal back board- (perforations not modelled in this image)

WHAT'S NEXT

- Garry Ryman working on approval process.
- Finalise internal design.
- Aiming for commence construction August 2020 with completion by December 2020

